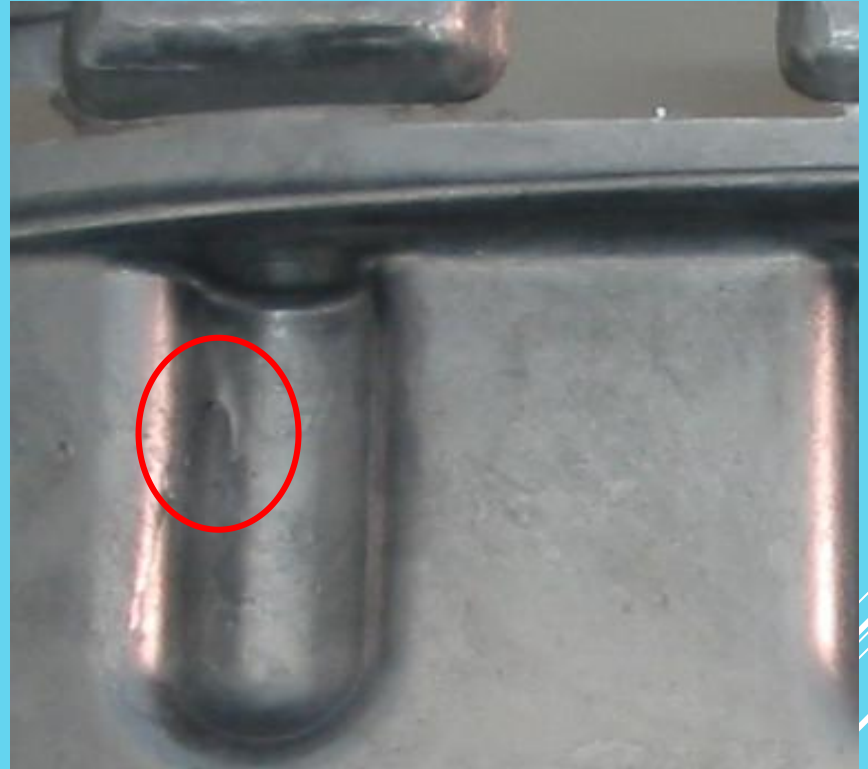




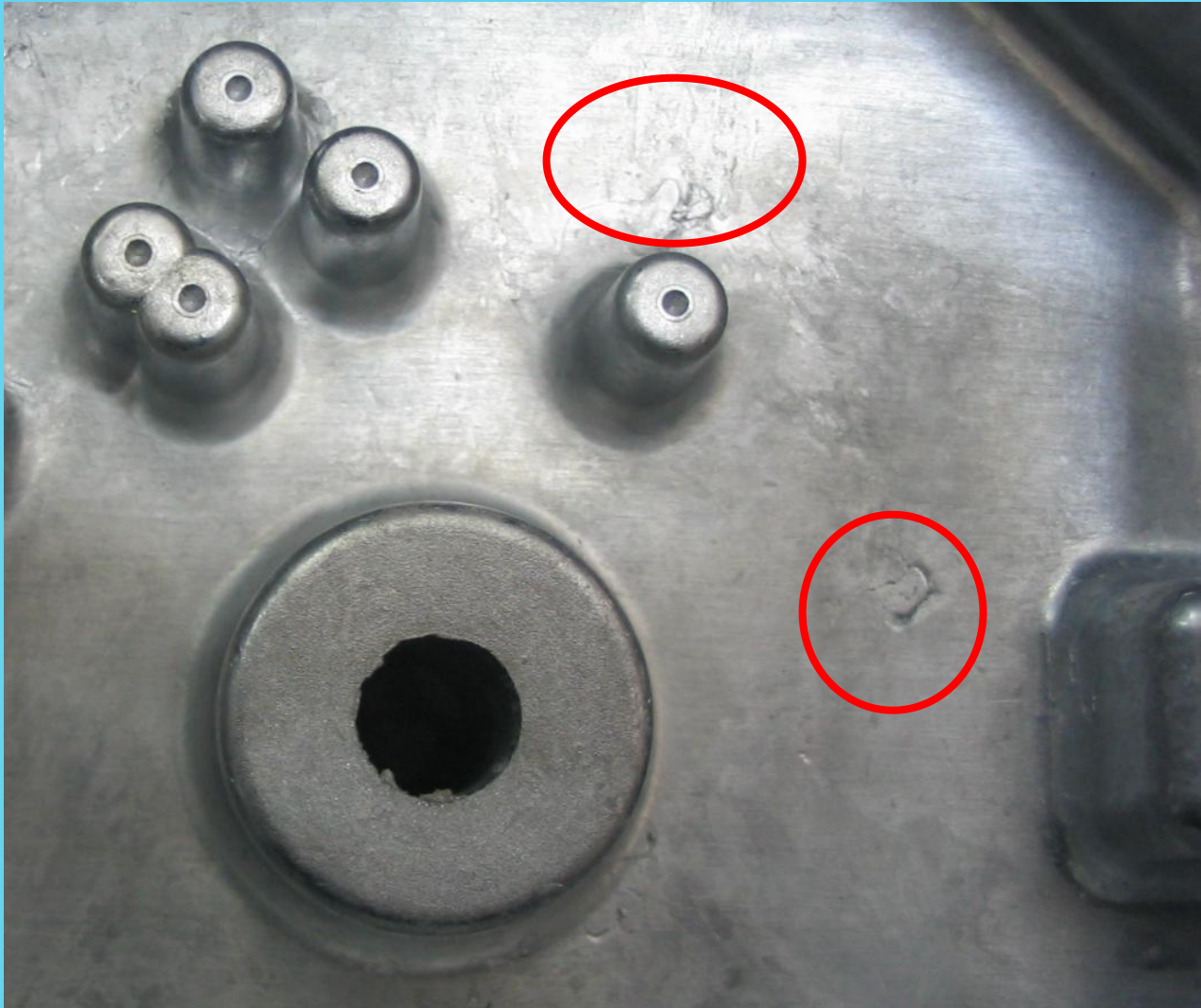
non-fills (成形不良)



stained casting(油污,油纹)



laminations (夹层)



cold flow 冷隔,冷格



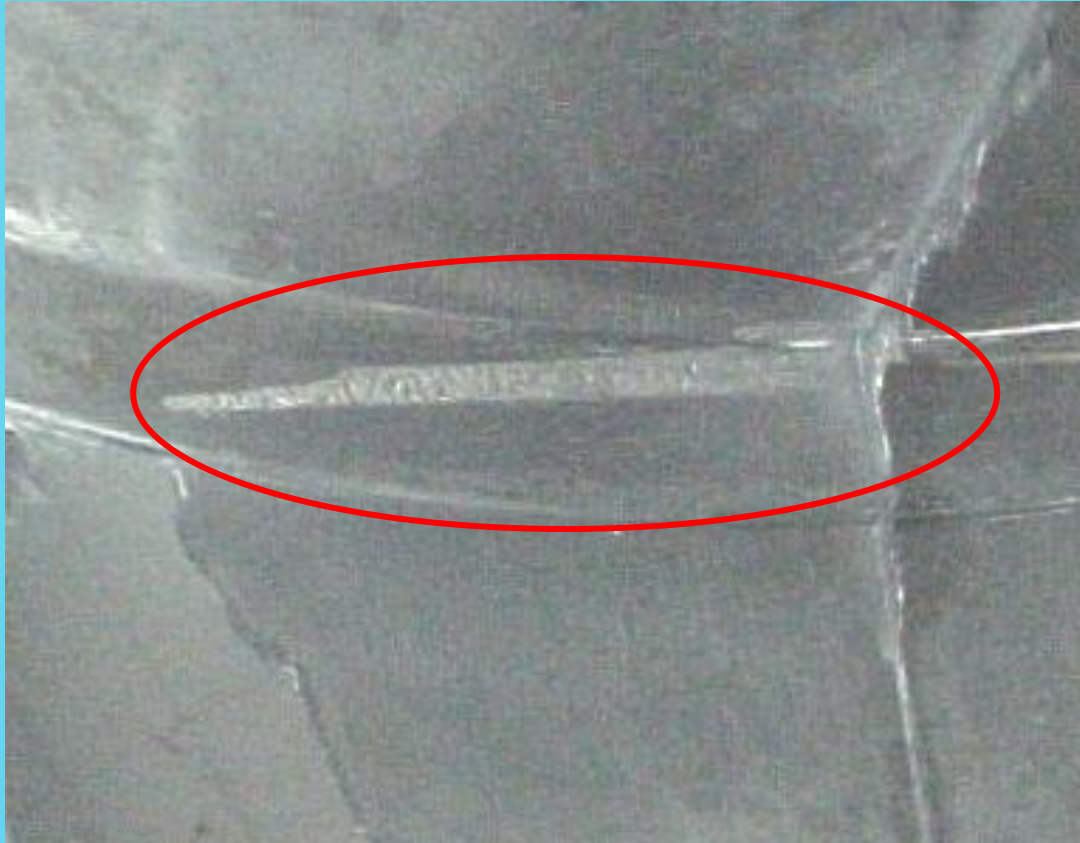
blisters (气泡)



sinks (缩凹)



solder(烧模)



drags (拉模, 拉伤)



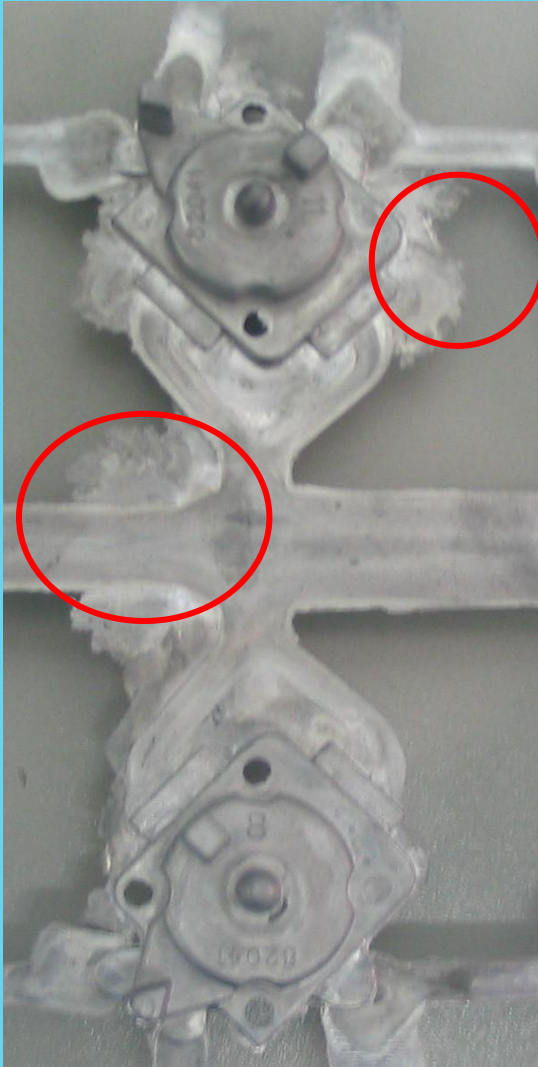
deformation from ejector pins, pushed pins (顶凸, 凸包)



mold collapse (崩模)



rust, corrosion (锈蚀, 发霉)



flash (披风, 飞边)



inclusions (夹杂,
夹渣)



step (级位)